

# PORT-A-HUT

Our portable shelters are extremely durable and versatile, standing the test of time.

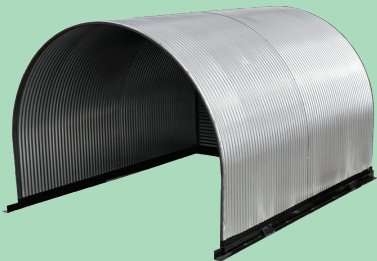
We offer shelter options for livestock and storage in four different sizes. You can create the Large and X-Large shelters to your specifications in 7-foot increments.

Our shelters serve many purposes. They are ideal livestock shelters and storage sheds for farms and small acreages.

## SMALL SHELTERS

Our small portable shelters work extremely well for feeder pigs, goats, sheep, calves, chickens, and other small livestock animals. These are the go-to huts for pasture farrowing or free-range farming.

4'6" wide x 3'10" high x 7' long



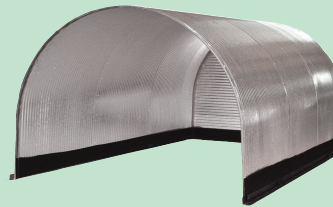
## MEDIUM SHELTERS

Our medium portable shelters work extremely well for feeder pigs, goats, sheep, calves, chickens, and other small livestock animals.

6' wide x 4'6" high x 7' long



6' wide x 4'6" high x 11' long



## LARGE SHELTERS

Our large portable shelters have been used for feeder pigs, goats, sheep, calves, ostriches, emus, llamas and even some zoo animals. Please note that the total height is 6' 3" with a 5'8" clearance under the cross brace inside. Front doors are also available as an add-on.

10' wide x 6'3" high x any length in 7' increments



## X-LARGE SHELTERS

The X-large portable shelters are great for livestock such as ostriches, emus, llamas, pigs, goats, sheep, calves, and zoo animals. They are also used as storage sheds for farm equipment, smaller tractors, and as a garage for vehicles. Please note that the total height is 8' with a 7'4" clearance under the cross brace inside.

14' wide x 8' high x any length in 7' increments



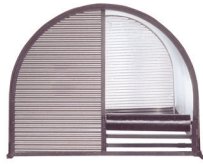
## SHELTER ADD-ONS

We make several add-on options for each shelter, based on its need or use. There are several options to accommodate pasture farrowing as well as the type of livestock. We also have options for use as a cost-effective storage shed for both the large and x-large shelters to serve as sheds.

## ADD-ON OPTIONS

### Small Shelter Add-ons

Pig Roller - The pig roller fastens to the front closure of the hut at the door latch, as displayed with partial front enclosure.



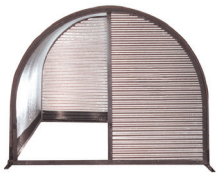
Guard Rail - The guard rail helps protect the baby pigs, allowing for passage behind the sow.



Shelter Pen - for bottle feeding calves, pigs, sheep, goats or other small animals.



### Small & Medium Shelter Add-ons



Half front enclosure



Full front enclosure w door

### Large / X-Large Shelter Add-ons



Front half top enclosure



Full doors for storage shed

## DEALER INFORMATION



**PORT-A-HUT**

EST 1964  
U.S.A  
FARM SHELTERS

We are known for our portable livestock shelters and storage sheds for farms and small acreages. We have manufactured and marketed our own line of portable steel shelters since 1964.

Our shelters are extremely durable, and versatile. They have been used for 60 years with pasture farrowing, one of the oldest methods for raising livestock.

They are ideal for pasture-raised animals, supporting sustainable farming practices. Over the years, our shelters have been used for chickens, pigs, sheep, goats, calves, horses, ostriches, emus, llamas, and even zoo animals.

We manufacture our shelters in the USA from heavy galvanized corrugated steel with an angle iron frame.



**PORT-A-HUT**

portahutusa.com